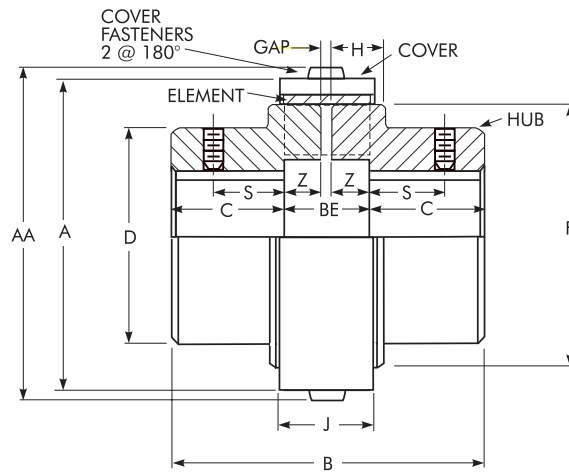


Type R10

Close Coupled Coupling/Dimensions — Millimeters



DIMENSIONS — MILLIMETERS †

SIZE ★	Torque Rating Nm	Allow Speed rpm	Max Bore Std Hub Mount ↓	Max Bore Protruded Shaft ▲	Cplg Wt No Bore - kg		A		AA		B	BE	C	D	F	H	J		S ▲	Z	Gap	Cover Fasteners ■	
					Nylon Cover	Steel Cover ●	Nylon Cover	Steel Cover ●	Nylon Cover	Steel Cover ●							Nylon Cover	Steel Cover ●				Size	Allen Wrench Tool
5R	62	4 500	38	38	1.34	1.48	76.5	76.5	80.5	80.5	72.0	20.0	26	60	64	15.0	23.0	23.0	15.9	9.0	2.00	M4	M2.5
10R	130	4 500	48	45	2.48	2.70	90.5	90.5	94.5	94.5	92.0	24.0	34	72	76	19.0	28.0	28.0	22.2	11.0	2.00	M4	M2.5
20R	315	4 500	60	58	5.59	6.07	126.0	124.0	132.1	130.1	122.0	32.0	45	92	102	25.0	37.1	37.1	25.4	15.0	2.00	M6	M4
30R	520	4 500	65	64	9.37	10.0	146.5	143.0	152.6	149.1	152.0	36.0	58	105	118	29.0	42.0	41.6	31.8	17.0	2.00	M6	M4
40R	1 020	3 600	85	80	17.1	18.1	182.4	177.0	190.0	185.0	181.0	47.0	67	130	150	34.0	54.5	53.0	41.3	21.0	5.00	M8	M5
50R	2 500	3 000	105	105	33.7	35.6	231.0	224.0	239.0	232.0	215.0	61.0	77	170	190	46.0	69.5	67.2	44.5	28.0	5.00	M8	M5
60R	4 000	2 500	133	133	...	62.4	...	267.0	...	278.0	275.4	75.4	100	200	228	60.2	..	67.0	...	35.2	5.00	M10	M6
70R	8 000	2 100	156	156	...	98.2	...	310.0	...	321.0	324.4	84.4	120	227	270	69.7	...	75.0	...	39.7	5.00	M10	M6
80R	15 000	1 800	186	186	...	165	...	370.0	...	381.0	376.8	96.8	140	270	328	83.4	...	85.0	...	45.4	6.00	M10	M6

★ Standard urethane element operating temperature: -40°C (-40°F) to 95°C (200°F). Dimensions are for reference only and are subject to change without notice unless certified.

† Inch/metric conversions may not be direct conversions.

● 5R-50R nylon cover is standard & epoxy coated steel cover is optional. 60R-80R epoxy coated steel cover is standard (nylon cover not available).

■ Cover Fasteners are ISO 7380 Stainless Steel Socket Button Head Cap screws. Two cover fasteners per coupling.

▲ A protruded shaft is defined as the shaft penetrating into the area shown above as Dimension "Z". Sizes 5R-50R are standard "clearance" fit with keyway and setscrews (one over keyway one at 90° from keyway). 60R-80R are standard "interference" fit with keyway & no setscrew.

◆ The number of application start/stop cycles should be limited to 10 per hour at the maximum bore condition unless long hubs are utilized. For applications with a Service Factor requirement of 2.0 or more, refer to Falk for possible use of long hubs for additional shaft engagement or utilization of Interference Fits.