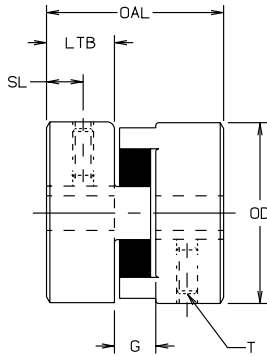
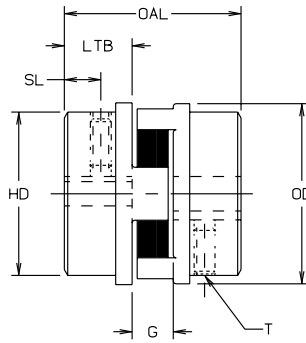


L Type, C Type & H Type Couplings

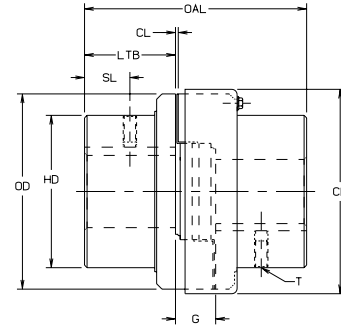
JW



Style 1



Style 2



Style 3

Dimensional Data—Inch

Size	Style No.	Bore		Outer Dia. OD	Overall Length OAL	Gap G	Length			Set Screw Location SL	Collar Dia. CD	Set Screw Size T	Weight lbs		Moment of Inertia WR ² lb-in ² (Solid)
		Min.	Max.				Thru Bore LTB	Hub Dia. HD	Clearance CL				Min. Bore	Max. Bore	
L035	1	.125	.375	.63	.81	0.28	0.27	0.63	N/A	0.13	N/A	#6-32	0.1	0.1	.003
L050	1	.250	.625	1.08	1.71	0.48	0.62	1.08	N/A	0.31	N/A	1/4-20	0.3	0.2	.054
L070	1	.250	.750	1.36	1.98	0.48	0.75	1.36	N/A	0.38	N/A	1/4-20	0.6	0.4	.115
L075	1	.250	.875	1.75	2.13	0.50	0.82	1.75	N/A	0.31	N/A	1/4-20	1.0	0.8	.388
L090	1	.250	1.000	2.11	2.15	0.52	0.82	2.11	N/A	0.44	N/A	1/4-20	1.5	1.2	.772
L095	1	.437	1.125	2.11	2.51	0.52	1.00	2.11	N/A	0.44	N/A	5/16-18	1.8	1.3	.890
L099	1	.437	1.188	2.54	2.84	0.71	1.06	2.54	N/A	0.44	N/A	5/16-18	2.5	2.0	2.048
L100	1	.437	1.375	2.54	3.48	0.71	1.38	2.54	N/A	0.44	N/A	5/16-18	3.2	2.4	2.783
L110	1	.625	1.625	3.32	4.22	0.88	1.68	3.32	N/A	0.75	N/A	3/8-16	6.6	5.3	8.993
L150	1	.625	1.875	3.75	4.50	1.00	1.75	3.75	N/A	0.75	N/A	3/8-16	8.8	7.0	11.477
L190	2	.750	2.125	4.50	4.86	1.00	1.94	4.00	N/A	0.88	N/A	1/2-13	15.3	12.3	39.256
L225	2	.750	2.625	5.00	5.34	1.00	2.18	4.25	N/A	1.00	N/A	1/2-13	19.6	15.0	65.000
L276	2	.875	2.875	6.18	7.82	1.58	3.12	5.00	N/A	1.56	N/A	1/2-13	40.0	30.5	188.000
C226	3	.875	2.500	5.15	7.00	1.50	2.75	4.12	.12	1.38	5.50	1/2-13	29.0	22.0	74
C276	3	.875	2.875	6.18	7.87	1.63	3.12	5.00	.12	1.56	6.53	1/2-13	47.0	36.0	188
C280	3	1.250	3.000	7.50	7.87	1.63	3.12	5.50	.12	1.56	7.81	1/2-13	61.0	49.0	362
C285	3	1.250	4.000	8.50	9.13	1.63	3.75	6.50	.12	1.75	8.88	5/8-11	87.0	68.0	642
C295	3	1.500	3.500	9.12	9.38	1.88	3.75	6.25	.12	1.88	9.62	5/8-11	97.0	78.0	862
C2955	3	1.750	4.000	9.12	10.38	1.88	4.25	7.12	.12	2.12	9.62	5/8-11	117.0	90.0	932
H3067	3	2.125	4.500	10.00	11.62	2.12	4.75	7.00	.12	2.37	10.68	5/8-11	162.0	123.0	1485
SXB(NBR) HYTREL				10.00	11.62	2.12	4.75	7.00	.12	2.37	10.68	5/8-11	162.0	123.0	1485
H3567	3	2.625	5.000	11.00	12.38	2.38	5.00	7.75	.12	2.50	11.68	5/8-11	246.0	195.0	2174
SXB(NBR) HYTREL				11.00	12.38	2.38	5.00	7.75	.12	2.50	11.68	5/8-11	246.0	195.0	2174
H3667	3	3.000	5.625	12.00	13.88	2.62	5.63	8.75	.12	2.81	12.45	3/4-10	262.0	190.0	3591
SXB(NBR) HYTREL				12.00	13.88	2.62	5.63	8.75	.12	2.81	12.45	3/4-10	262.0	190.0	3591
H4067	3	3.250	6.250	13.25	15.38	2.88	6.25	9.75	.12	3.12	14.00	3/4-10	390.0	291.0	6287
SXB(NBR) HYTREL				13.25	15.38	2.88	6.25	9.75	.12	3.12	14.00	3/4-10	390.0	291.0	6287
H4567	3	3.500	7.000	14.50	17.12	3.12	7.00	10.75	.12	3.50	15.75	3/4-10	575.0	435.0	10565
SXB(NBR) HYTREL				14.50	17.12	3.12	7.00	10.75	.12	3.50	15.75	3/4-10	575.0	435.0	10565

- Notes:**
1. N/A indicates not applicable.
 2. Maximum bore is less for H Type couplings with Hytrel due to increased torque capacity.
 3. Jaw coupling hubs are standard with one set screw, for two set screws see RRS & RRC sections.
 4. See pages JW-7 and JW-20 for Performance Data.